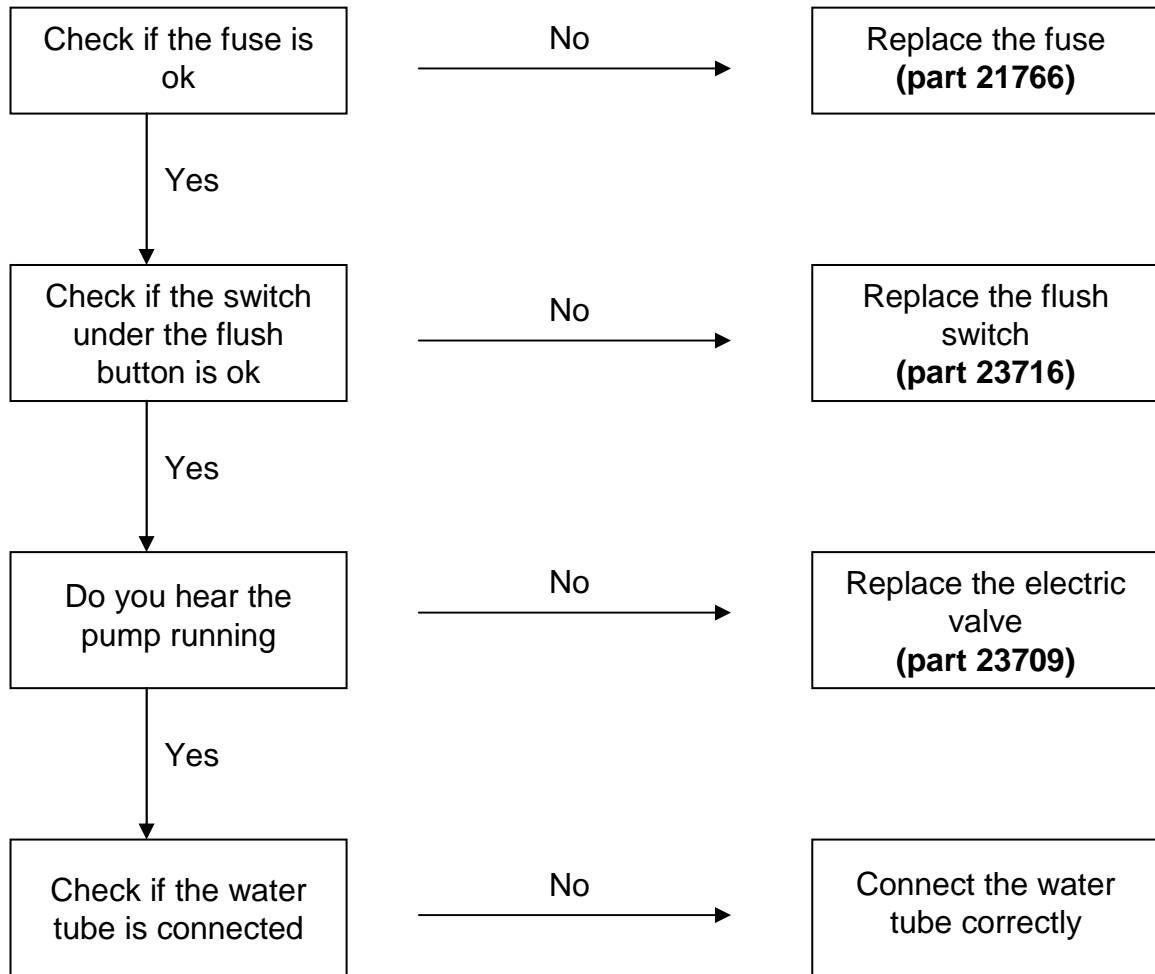




1. No flush C200S/CS



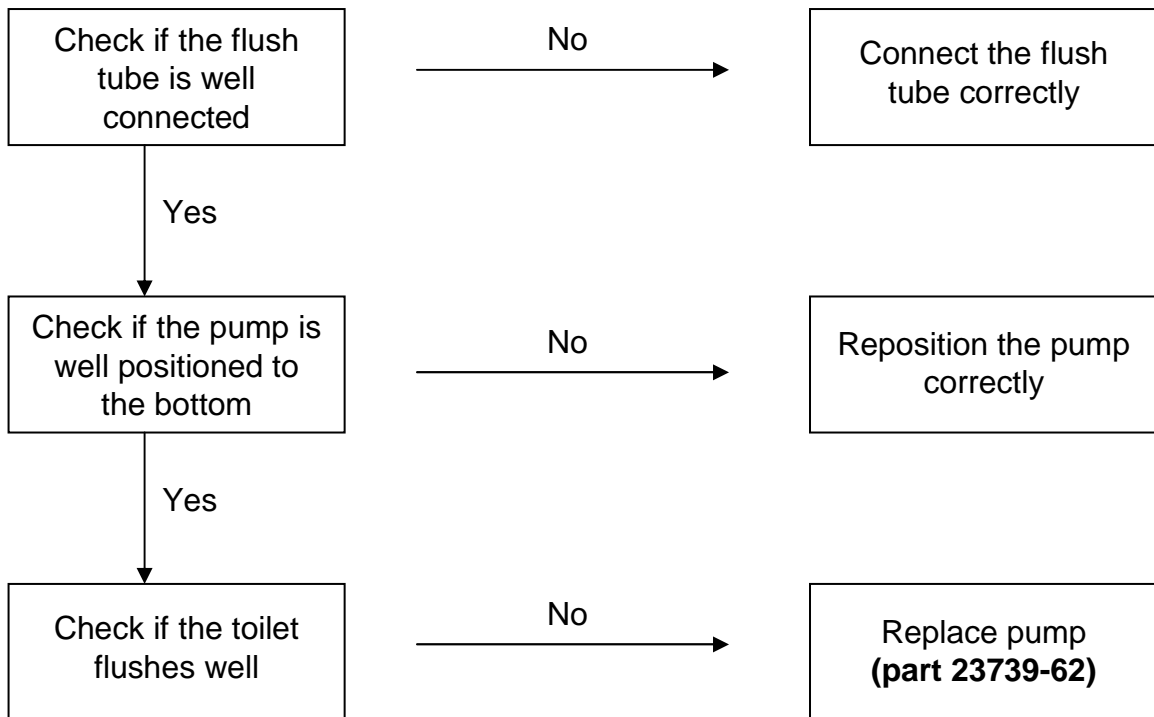
Before starting, check if the toilet is well connected
see the 12V connection scheme



Repair instructions you can find in the repair
instructions chapter and/or on our website
www.thetford.eu



1. No flush C200CW



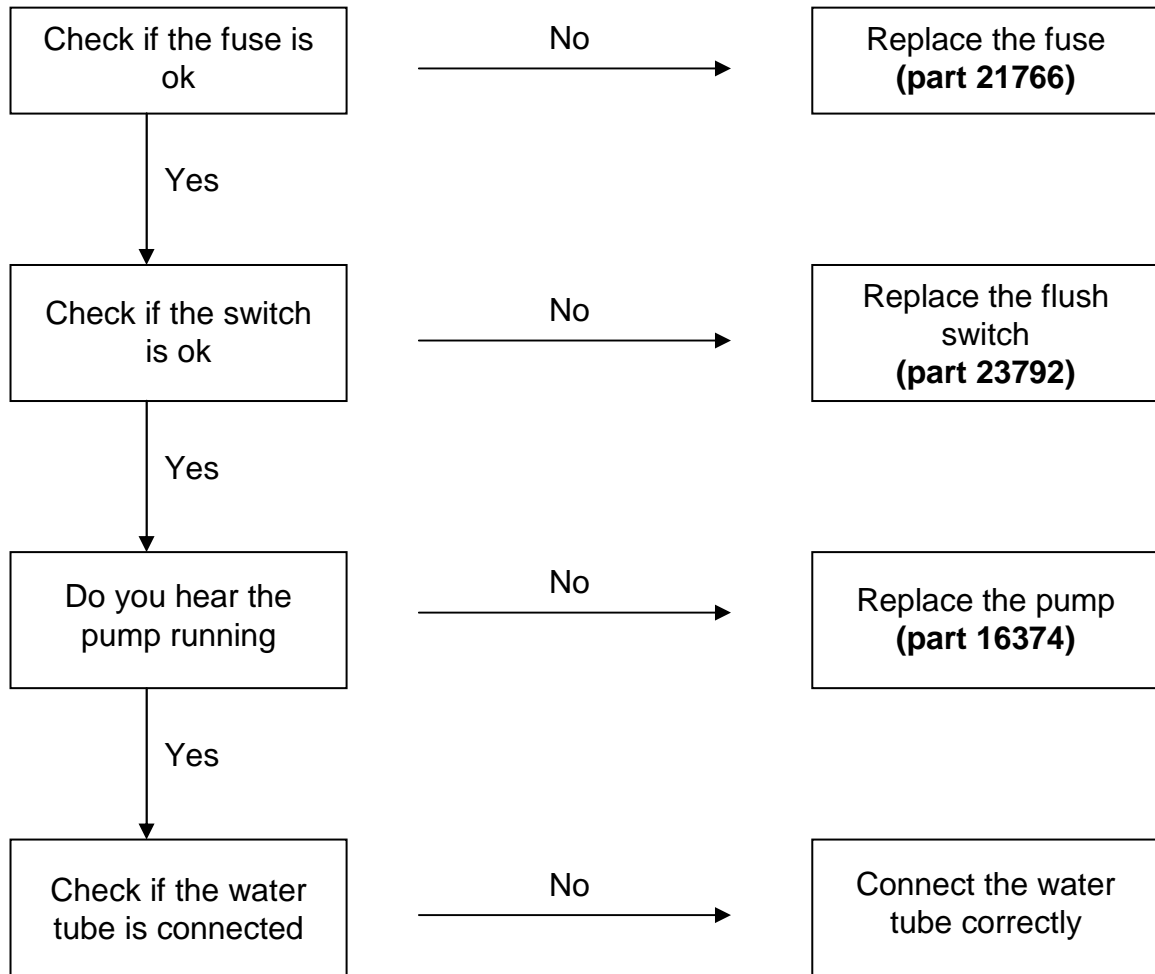
Repair instruction for 23739-62 you can find in the repair instructions chapter and/or on our website www.thetford.eu



1. No flush C200CWE



Before starting, check if the toilet is well connected
see the 12V connection scheme



Repair instructions you can find in the repair
instructions chapter and/or on our website
www.thetford.eu

2. No level indication of the C200 Holding Tank



Before starting, Check the connection wires at the control panel

