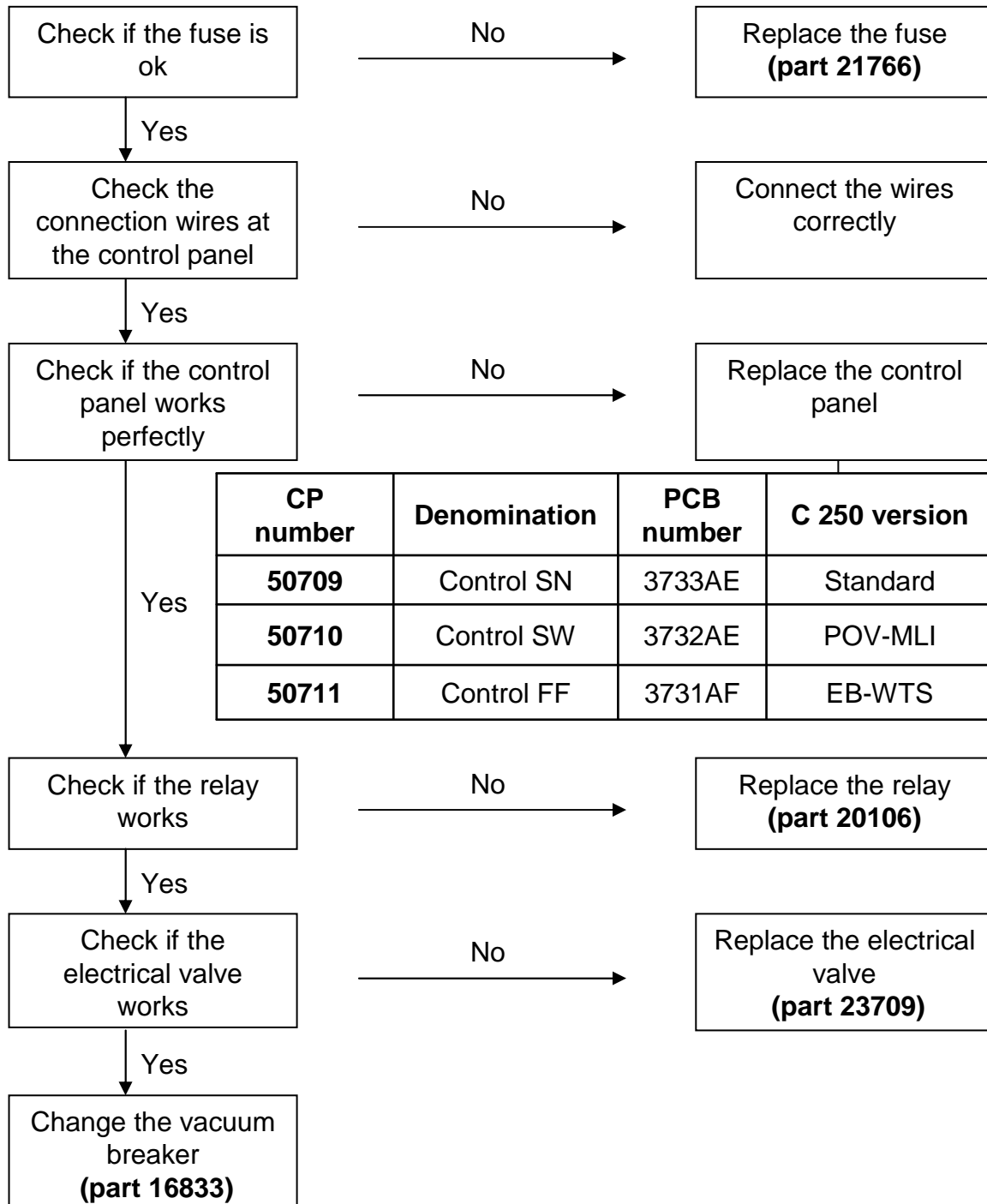


No flush C250CS

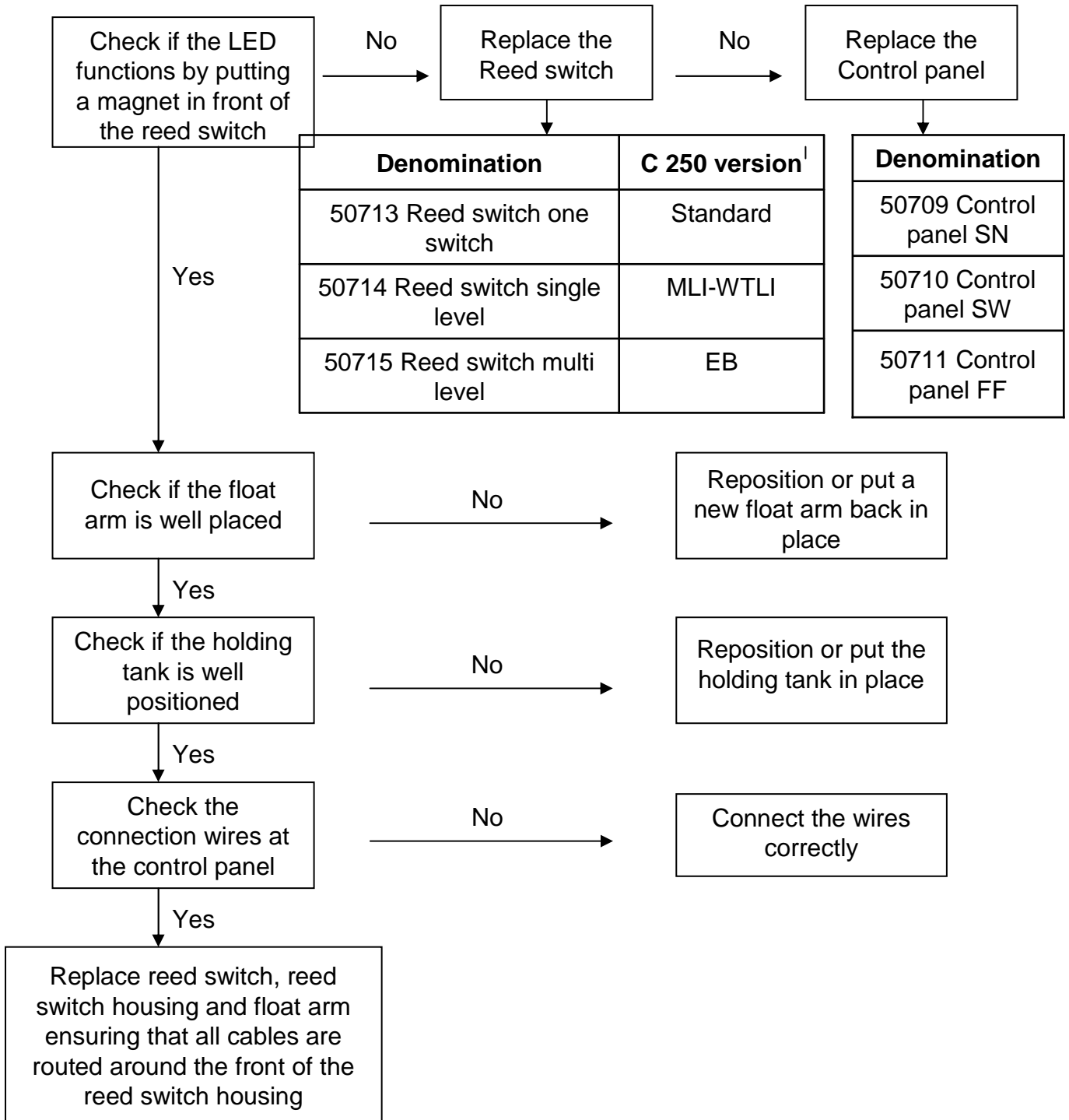
Ensure that the vehicle water pump functions



Before starting, check if the toilet is well connected
see the 12V connection scheme

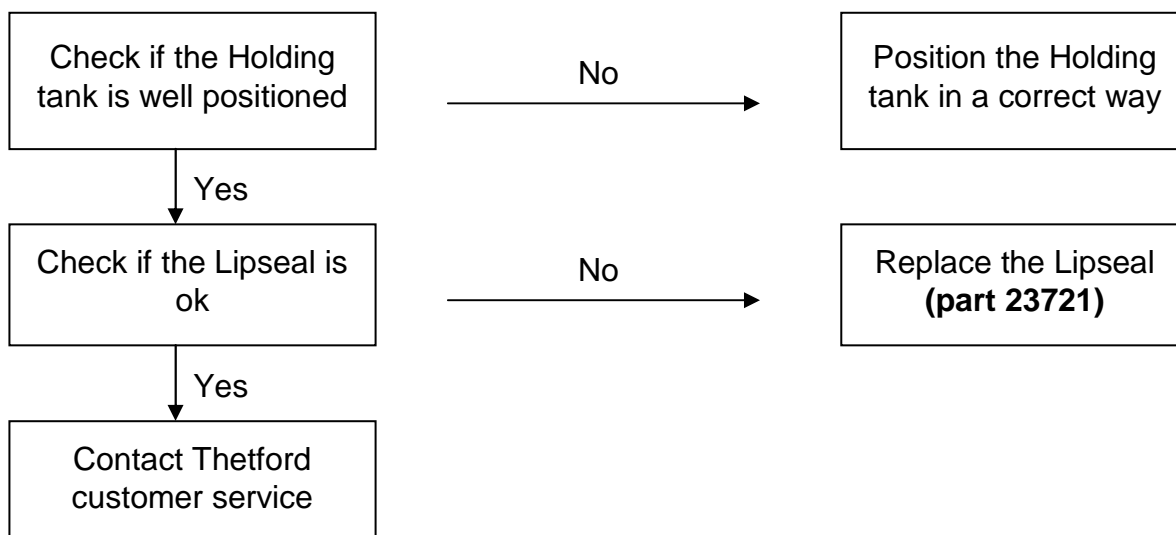


No level indication of the C250 Holding Tank



Leakages

➤ Leakage between the bowl and the Holding Tank



➤ Leakage at the Holding tank

▪ Leakage at the vent button

Replace the vent button
(part 07524-92)

▪ Leakage at the pour out spout

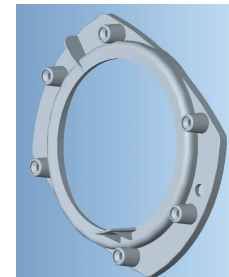
Replace the pour out spout
(part 50719-92)

▪ Leakage at the holding tank plate

Replace the Lipseal
(part 23721)

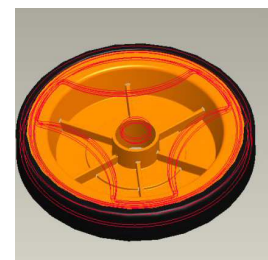
Blade does not close off the holding tank C250

Issue	: Blade shoots over the plate seal and do not close off the holding tank
Solution	: Rib on plate seal higher to stop the blade
Implementation	: September 6th 2007
Spare part nr.	: 50727-06
Compensation	: 5 minutes



Wheels holding tank C250

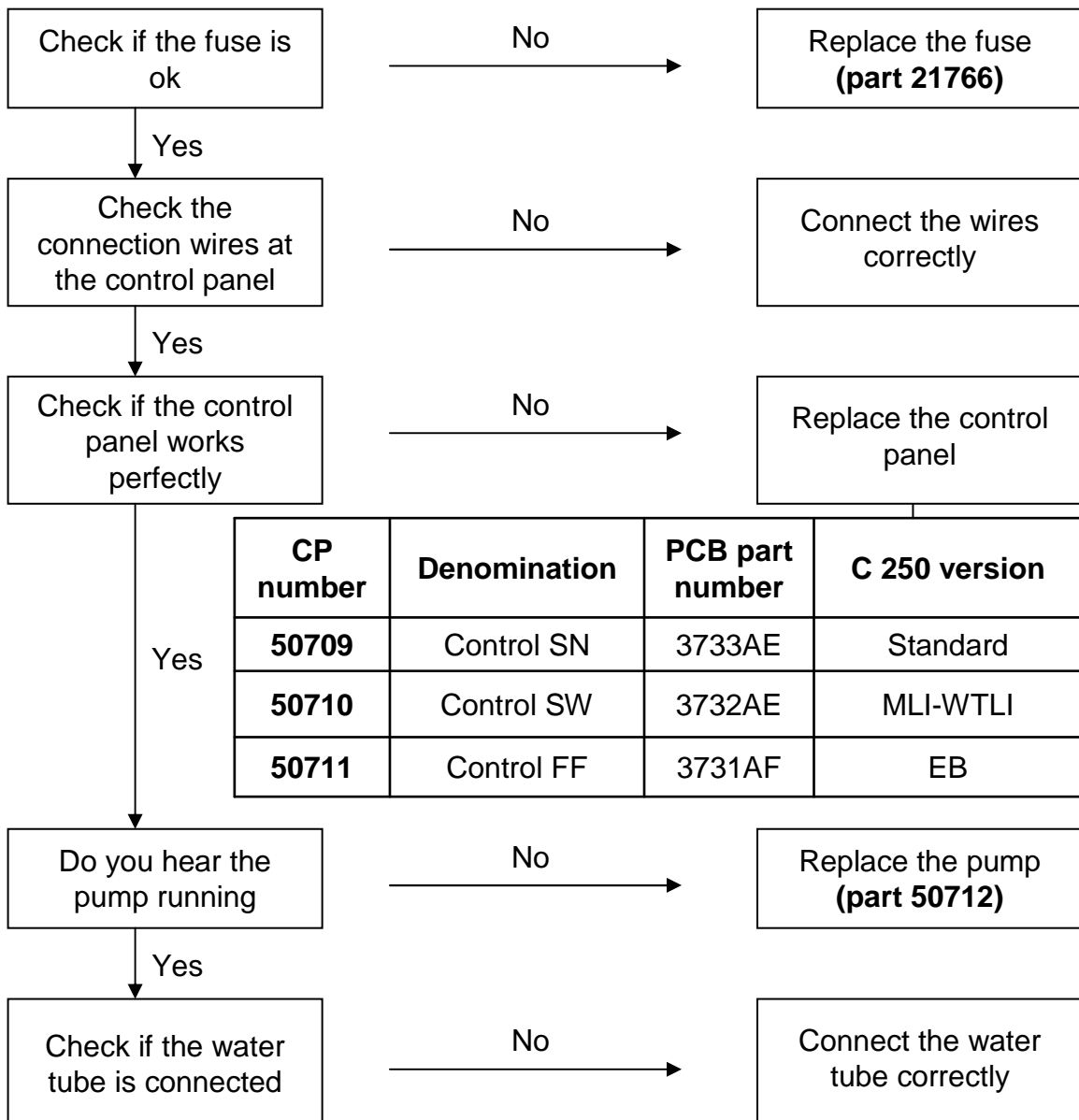
Issue	: Wheels flip when pushing, pulling is ok
Solution	: Tool change by adding ribs to the wheel to minimize flexing of the wheels
Implementation	: September 1st 2007
Spare part nr.	: 50726
Compensation	: 5 minutes



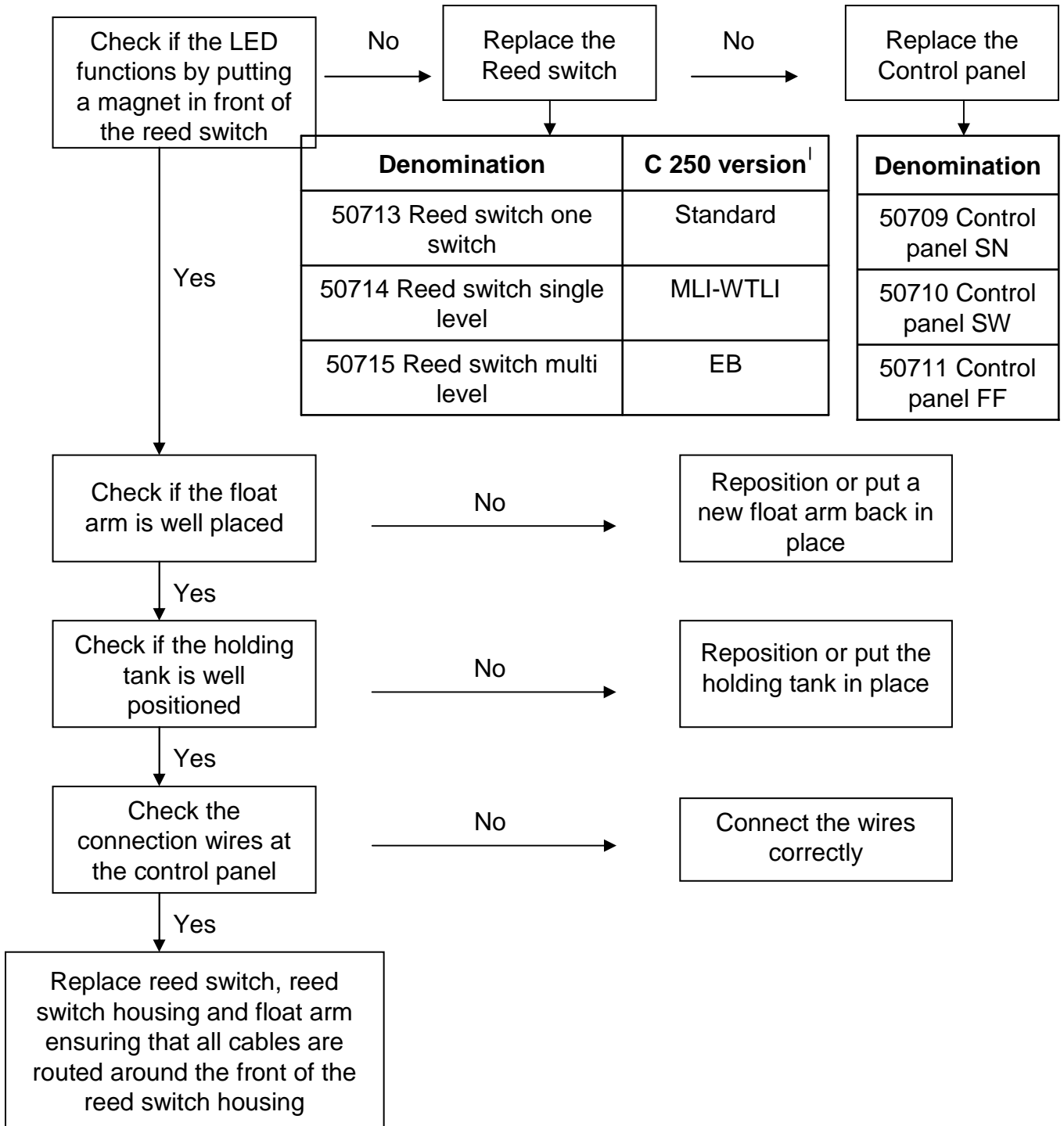
No flush C250 CWE



Before starting, check if the toilet is well connected
see the 12V connection scheme

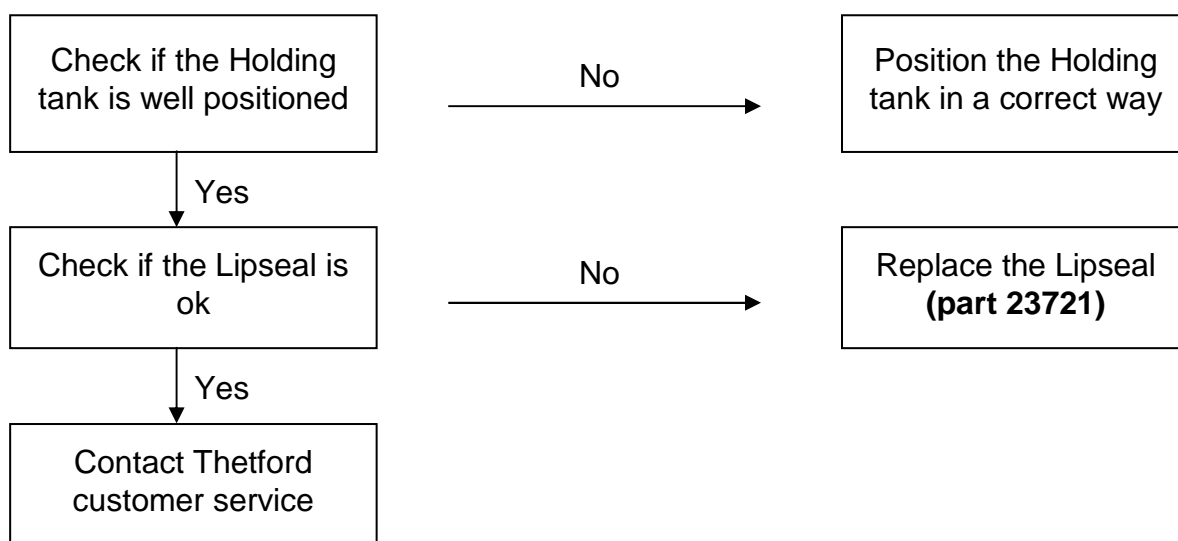


No level indication of the C250 Holding Tank

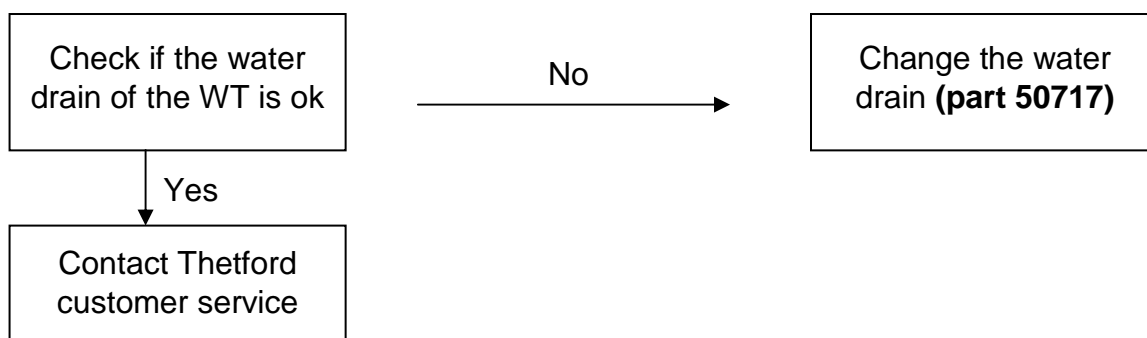


Leakages

➤ Leakage between the bowl and the Holding Tank



➤ Leakage at the water tank



➤ **Leakage at the Holding tank**

▪ **Leakage at the vent button**

Replace the vent
button
(part 07524-92)

▪ **Leakage at the pour out spout**

Replace the pour out
spout
(part 50719-92)

▪ **Leakage at the holding tank plate**

Replace the Lipseal
(part 23721)

Leakage pump C250CWE

Issue : Leakage at welded connection between pump-housing and pump bracket

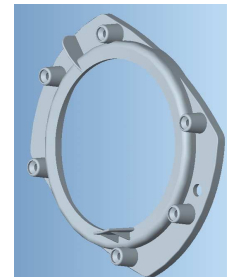
Solution : More rigid tube connection and clamp have been added

Implementation : As from September 24 2007



Blade does not close off the holding tank C250

Issue	: Blade shoots over the plate seal and do not close off the holding tank
Solution	: Rib on plate seal higher to stop the blade
Implementation	: September 6th 2007
Spare part nr.	: 50727-06
Compensation	: 5 minutes



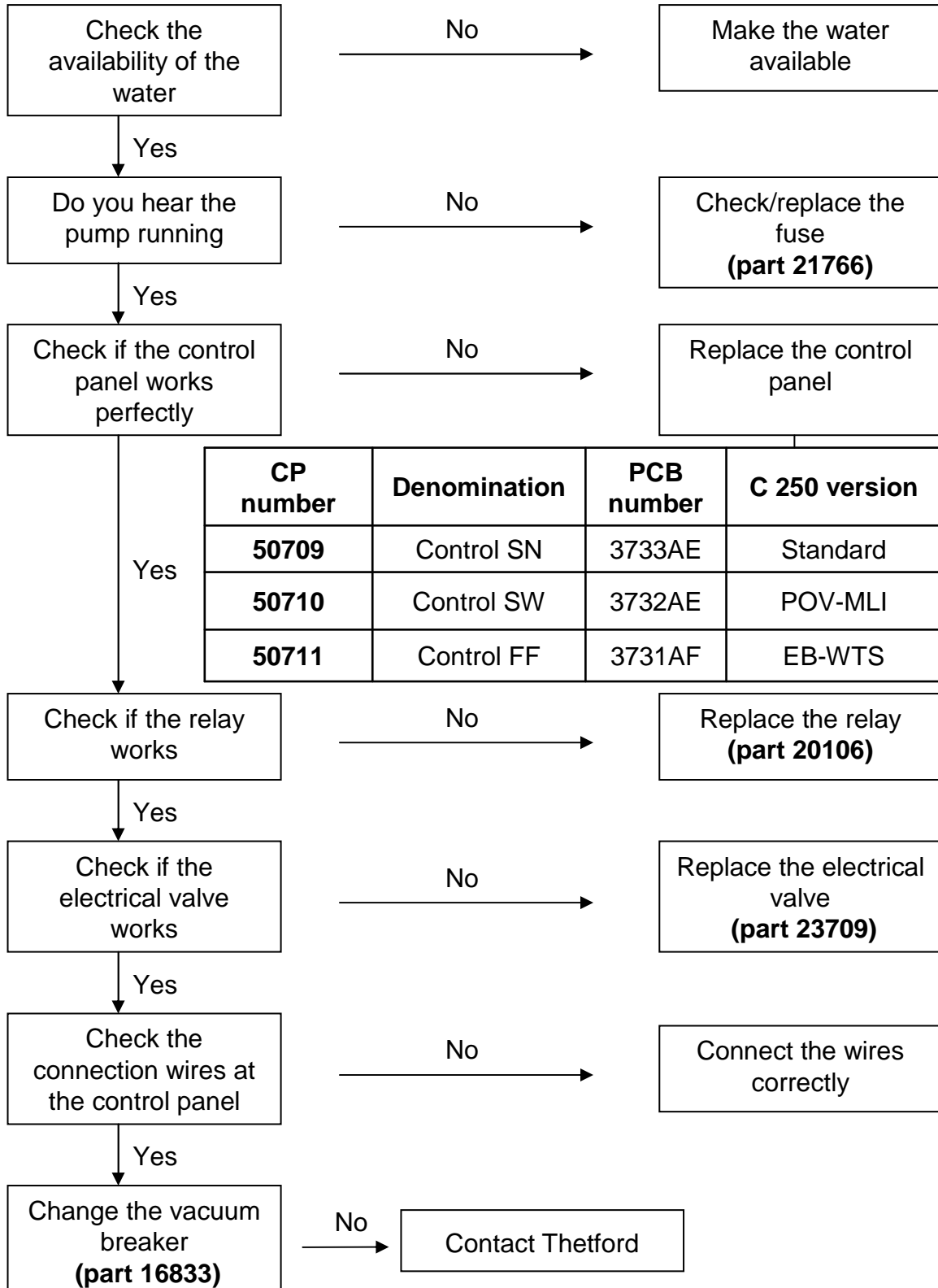
Wheels holding tank C250

Issue	: Wheels flip when pushing, pulling is ok
Solution	: Tool change by adding ribs to the wheel to minimize flexing of the wheels
Implementation	: September 1st 2007
Spare part nr.	: 50726
Compensation	: 5 minutes

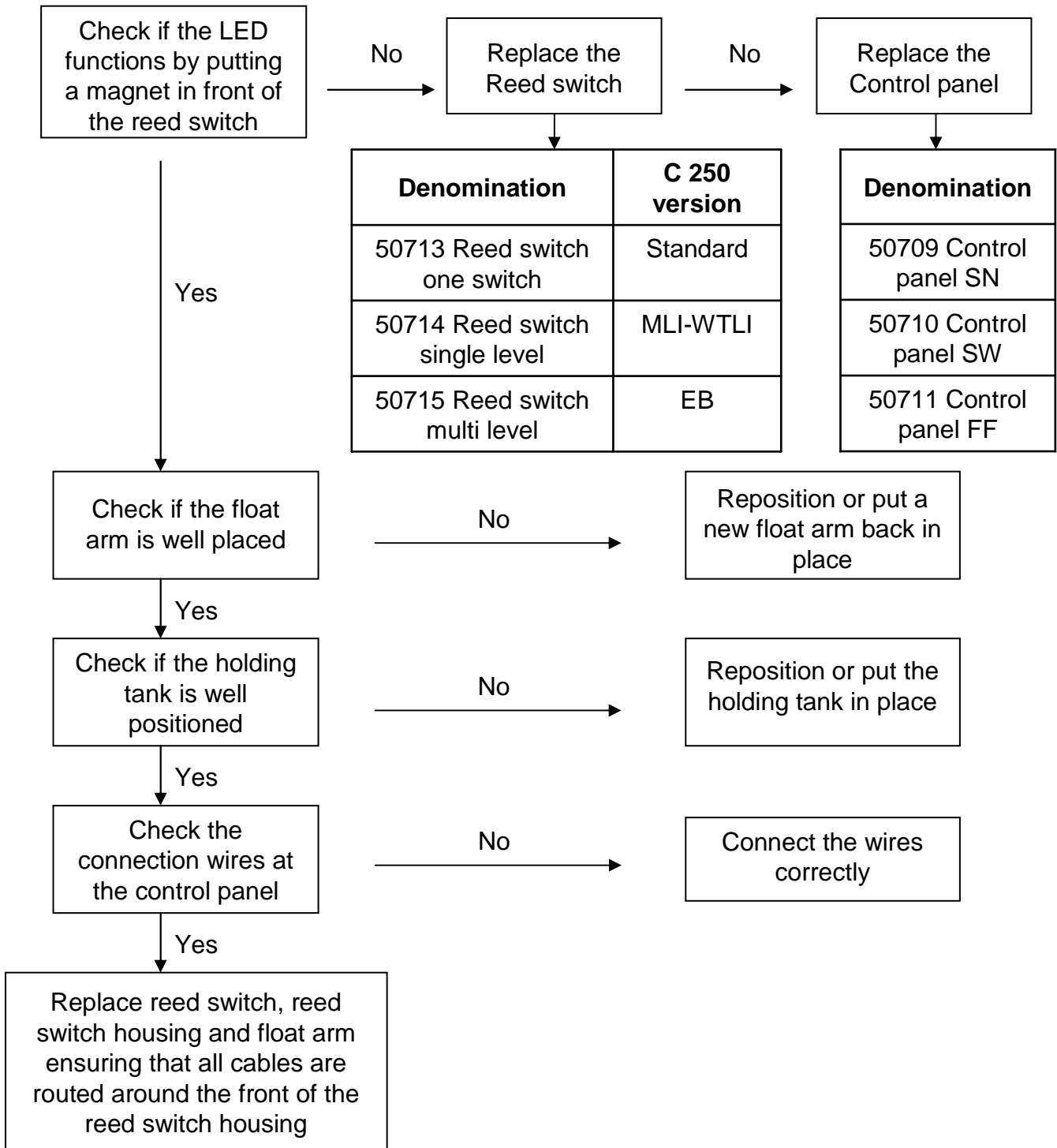


No flush C250S

Ensure that the vehicle water pump functions

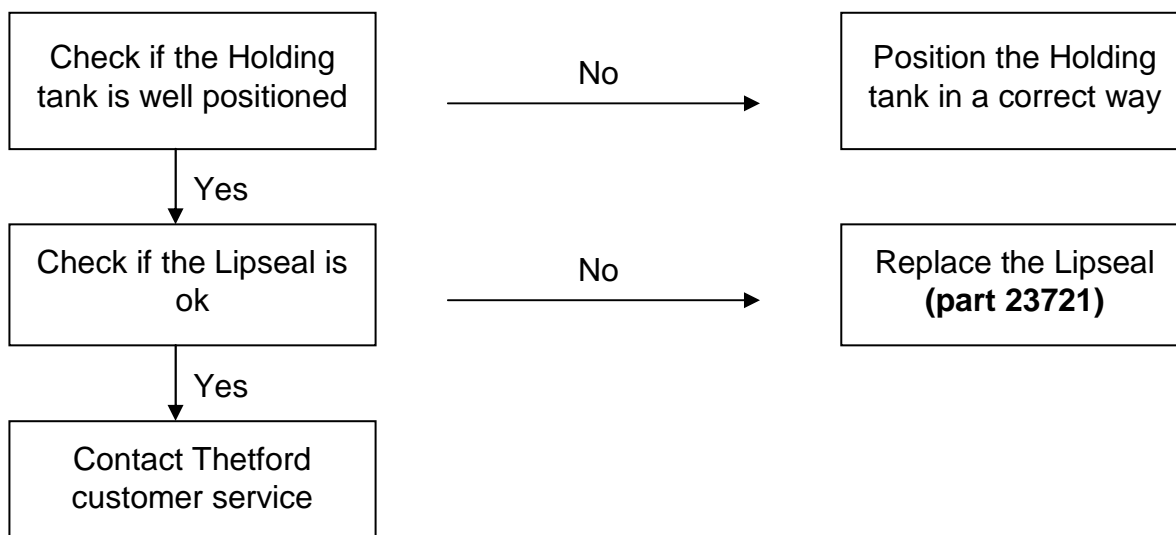


No level indication of the C250 Holding Tank



Leakages

➤ Leakage between the bowl and the Holding Tank



➤ Leakage at the Holding tank

▪ Leakage at the vent button

Replace the vent button
(part 07524-92)

▪ Leakage at the pour out spout

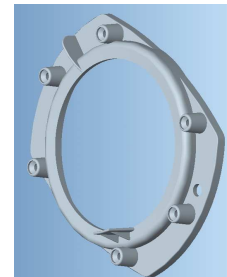
Replace the pour out spout
(part 50719-92)

▪ Leakage at the holding tank plate

Replace the Lipseal
(part 23721)

Blade does not close off the holding tank C250

Issue	: Blade shoots over the plate seal and do not close off the holding tank
Solution	: Rib on plate seal higher to stop the blade
Implementation	: September 6th 2007
Spare part nr.	: 50727-06
Compensation	: 5 minutes



Wheels holding tank C250

Issue	: Wheels flip when pushing, pulling is ok
Solution	: Tool change by adding ribs to the wheel to minimize flexing of the wheels
Implementation	: September 1st 2007
Spare part nr.	: 50726
Compensation	: 5 minutes

