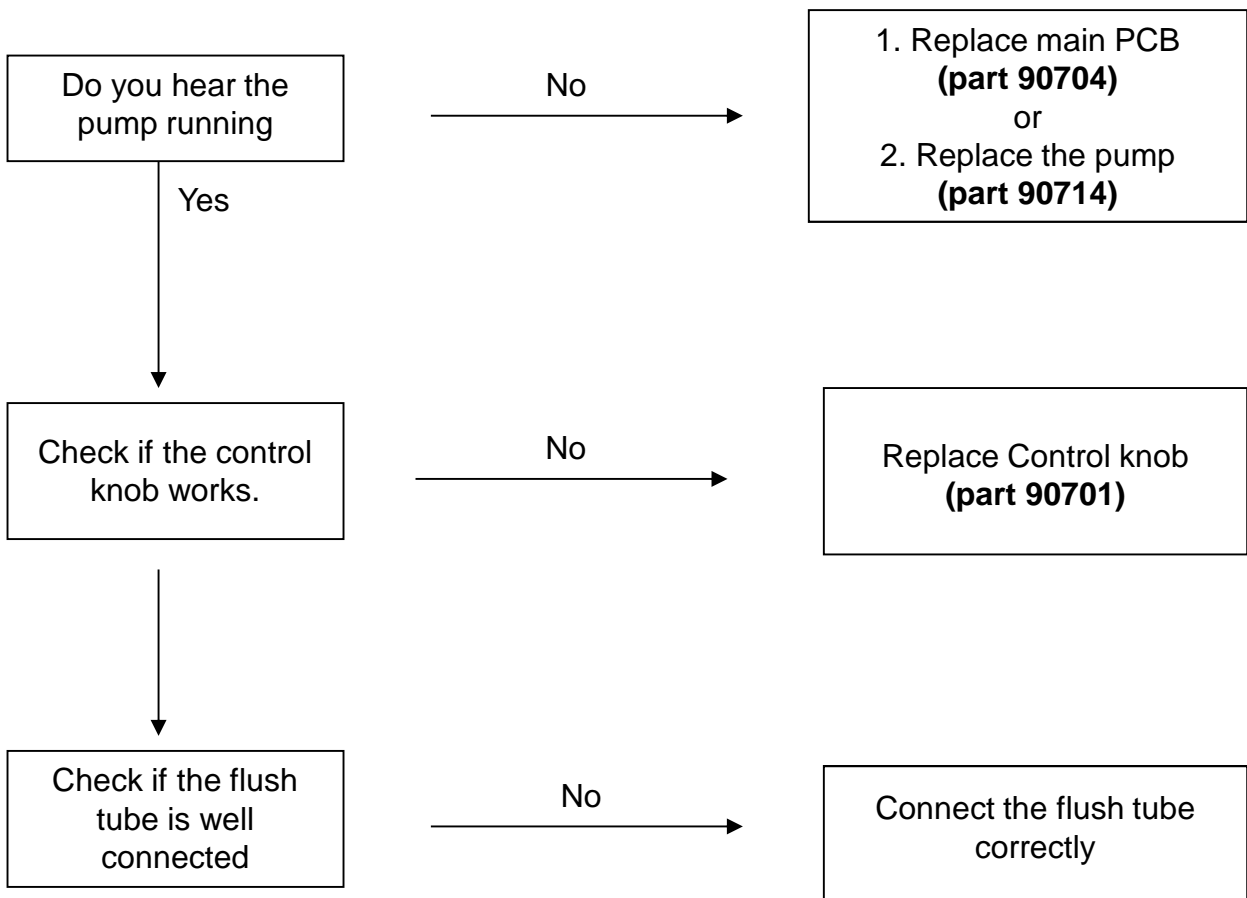


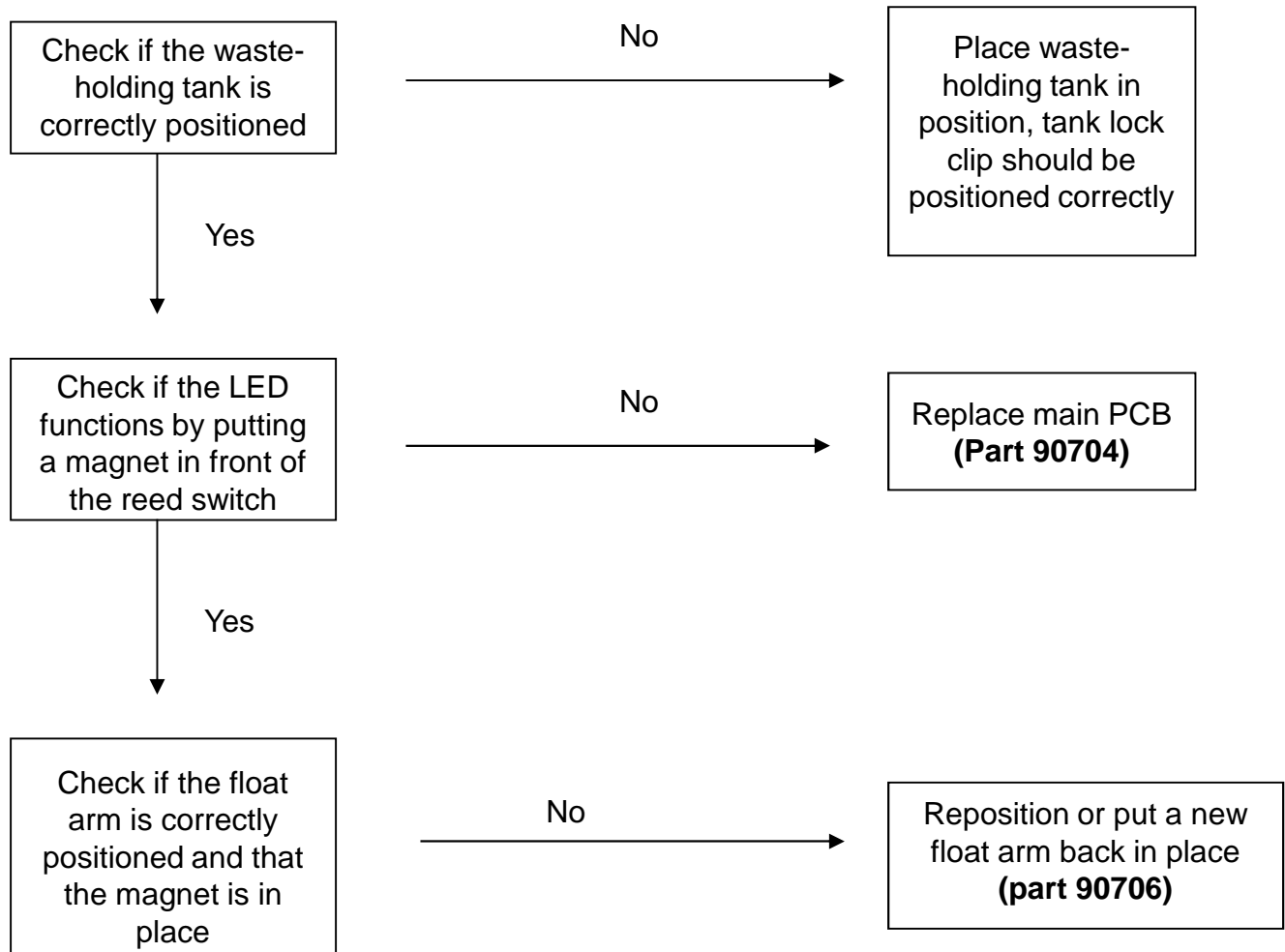
No flush C500C



Before starting, ensure that the toilet is connected properly by checking the 12v diagram. Also ensure that the fresh water tank is full.

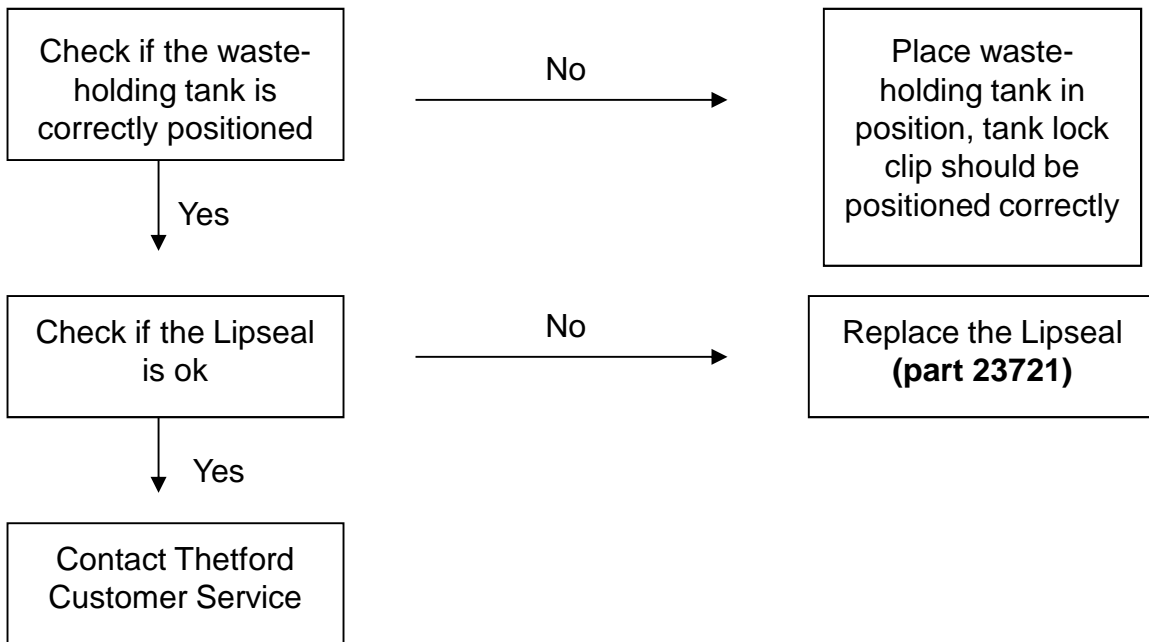


No level indication of the C500 Waste-Holding Tank

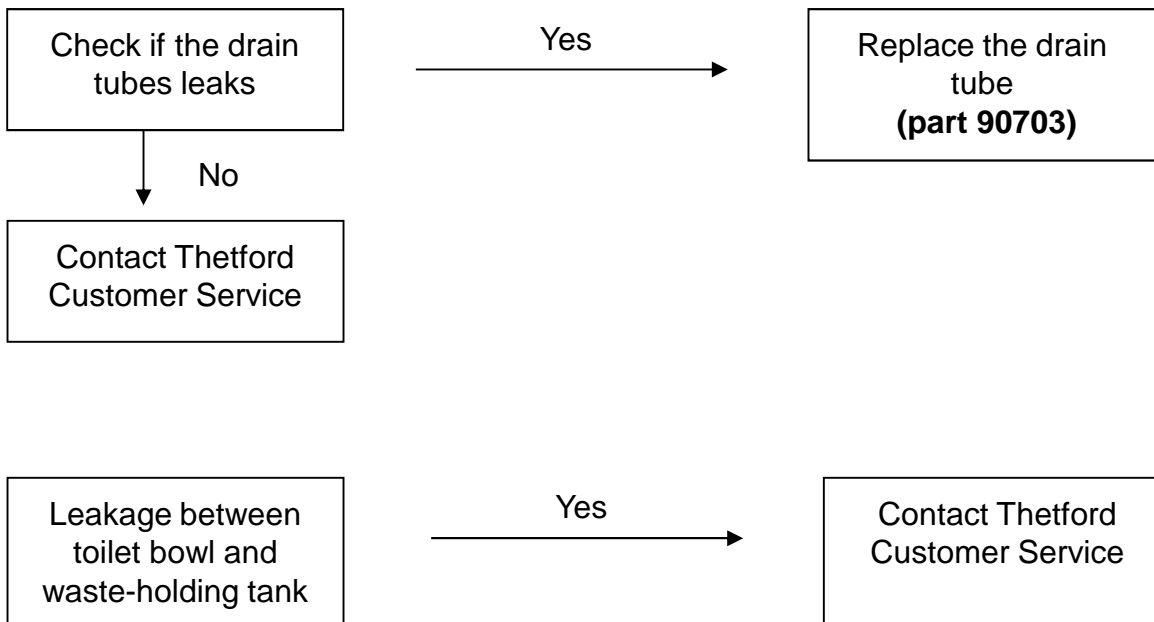


Leakages

➤ Leakage between the bowl and the Waste-Holding tank



➤ Leakage at the Water tank





➤ **Leakage at the Waste-Holding tank**

▪ **Leakage at the vent button**

Replace the vent button
(part 3230716)

▪ **Leakage at the pour out spout**

Replace the pour out spout
(part 3230606)

▪ **Leakage at the automatic vent**

